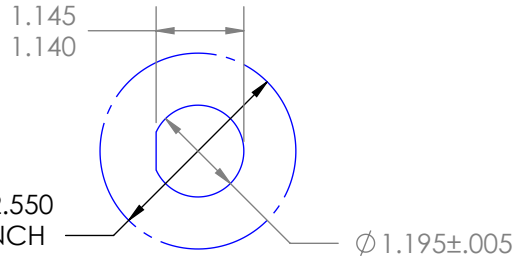
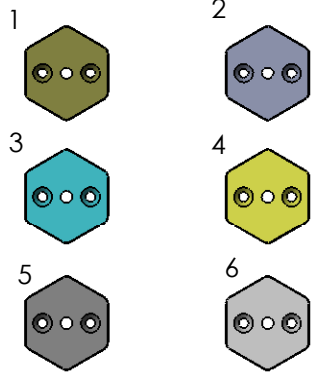


RECOMMENDED PANEL CUTOUT
VIEW FROM FRONT OF PANEL



BASE MATERIAL & PLATING OPTIONS
900-0140-XXXXXX

- 1 - ALUMINUM - CAD PLATE OLIVE DRAB
- 2 - ALUMINUM - STEEL GRAY HARD ANODIZE
- 3 - ALUMINUM - ELECTROLESS NICKEL - ZINC FINISH (MILITARY)
- 4 - BRONZE - NO PLATING
- 5 - ALUMINUM - BLACK HARD ANODIZE W/TEFLON IMPREGNATION (COMMERCIAL)
- 6 - 303 STAINLESS STEEL - PASSIVATED



TERMINI OPTIONS
900-0140-XXXXXX

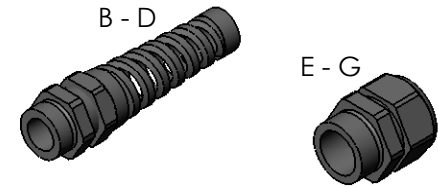
- 1 - NONE
- 2 - 4 TERMINI (STANDARD)
- 3 - 2 TERMINI / 2 DUMMY

INSERT KEY CONFIGURATION & COLOR OPTIONS
900-0140-XXXXXX

- A - KEY 1 - MULTIMODE - BLUE/GRAY (STANDARD)
- B - KEY 2 - MULTIMODE - BLUE/GRAY
- C - KEY 3 - MULTIMODE - BLUE/GRAY
- D - KEY 4 - MULTIMODE - BLUE/GRAY
- E - KEY 1 - MQJ - GOLD
- F - KEY 2 - MQJ - GOLD
- G - KEY 3 - MQJ - GOLD
- H - KEY 4 - MQJ - GOLD
- J - KEY 1 - SINGLEMODE - BLUE
- K - KEY 2 - SINGLEMODE - BLUE
- L - KEY 3 - SINGLEMODE - BLUE
- M - KEY 4 - SINGLEMODE - BLUE
- N - KEY 1 - APC - GREEN
- P - KEY 2 - APC - GREEN
- R - KEY 3 - APC - GREEN
- S - KEY 4 - APC - GREEN
- T - KEY 1 - SECURE - RED
- U - KEY 2 - SECURE - RED
- V - KEY 3 - SECURE - RED
- W - KEY 4 - SECURE - RED

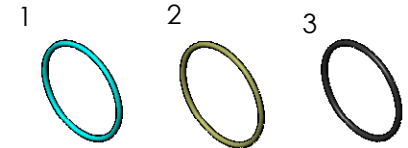
STRAIN RELIEF OPTIONS
900-0140-XXXXXX

- A - NONE (STANDARD)
- B - SPIRAL FOR .20"-.35" OD CABLE
- C - SPIRAL FOR .27"-.47" OD CABLE
- D - SPIRAL FOR .39"-.55" OD CABLE
- E - DOMED FOR .20"-.35" OD CABLE
- F - DOMED FOR .27"-.47" OD CABLE
- G - DOMED FOR .39"-.55" OD CABLE



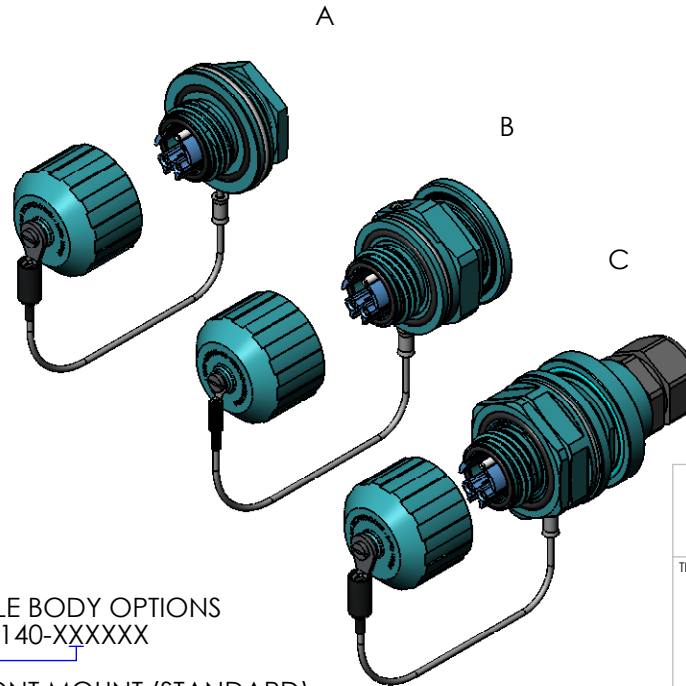
PANEL SEAL OPTIONS
900-0140-XXXXXX

- 1 - VITON (COMMERCIAL)
- 2 - EPDM NBC (MILITARY)
- 3 - EPDM CONDUCTIVE NBC/EMI (MILITARY)



RECEPTACLE BODY OPTIONS
900-0140-XXXXXX

- A - FRONT MOUNT (STANDARD)
- B - REAR MOUNT SPLIT NUT
- C - REAR MOUNT PANELMASTER



stran TECHNOLOGIES 39 GREAT HILL RD
NAUGATUCK, CT 06770
(203) 729-2572

TITLE:

4 CH. TFOCA
GenX JAMNUT
RECEPT.

LAST UPDATE:

12-01-09