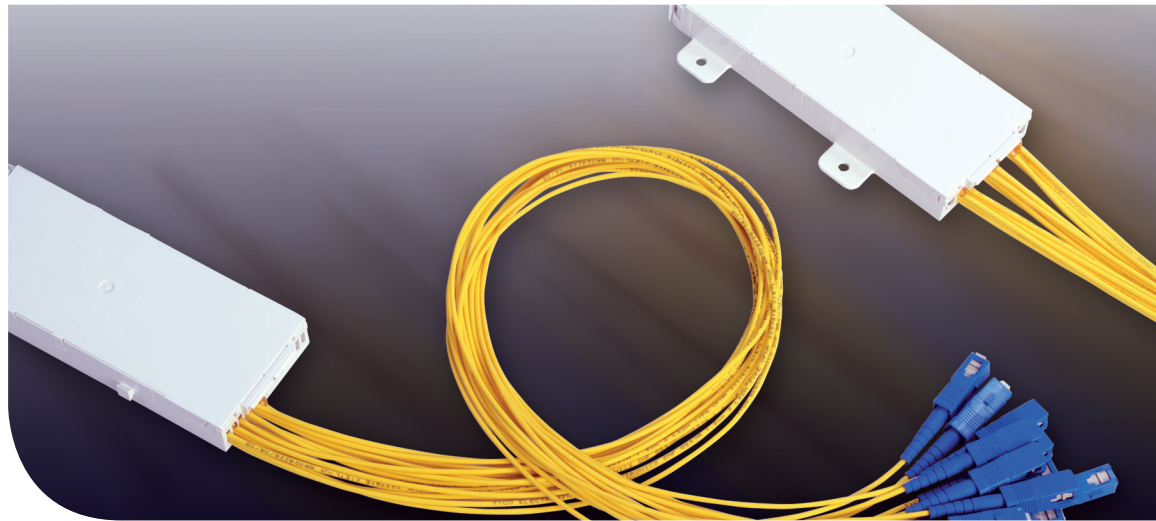


OCM6

Modular Wideband Splitters/Couplers for MDU Applications



Single-mode wideband splitters/couplers are passive optical devices that split and combine light in fiber networks. The OCM modular packaging provides a robust and simple method for integrating these devices into MDU applications.

A wide selection of split ratios and connector types ensure long-lasting compatibility.

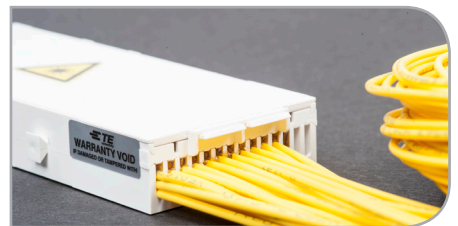
Advantages

- Reliable performance
- Low insertion loss
- Low polarization sensitivity
- Excellent mechanical protection
- Fast and simple installation
- Input connector integrated in the housing (in-line version)

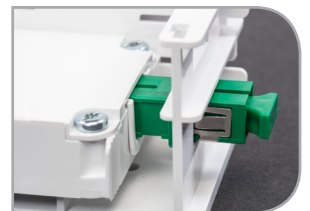
The splitter components are based on FBT (fused biconic tapered) technology for low split ratios. For higher split ratios, planar waveguide technology is used.



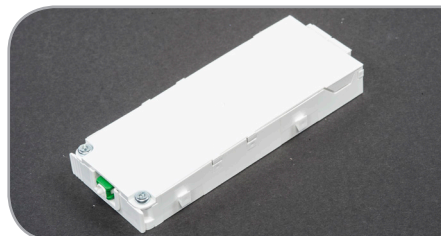
Butt



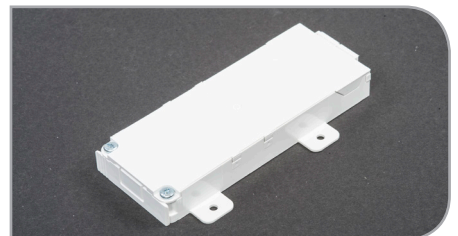
Cable Retention



Easy snap-on



Snap on sides



Fixation holes

Ordering information

OCM 6 - S X X X X XX - XXX X X

Splitter grade

- A Fused biconic tapered (for 1x2 and 2x2)
- P Planar technology
- O Low loss grade

Number of integrated splitters

Grade	A	P/O
1x2	10	-
2x2	8	-
1x4	-	5
2x4	-	5
1x8	-	3
2x8	-	3
1x16	-	2
2x16	-	2
1x32	-	1
2x32	-	1

Attention: This table shows the maximum number of integrated splitters for each splitter technology type

Number of inputs

- 1
- 2

2 inputs are only possible for the butt orientation of the module

Number of outputs

- 2
- 4
- 8
- G 16
- W 32

Fixation

- 1 Snap on side
- 2 Fixation holes

Orientation

- B Butt
- I In-line with connector

Pigtail length (BUDI Plug-and-Play)

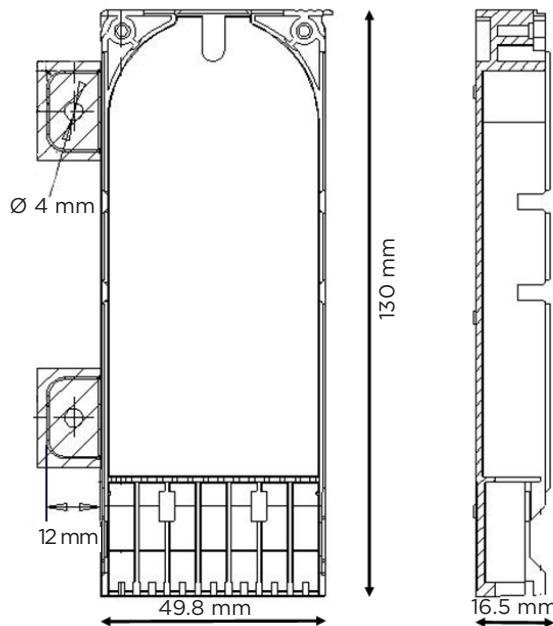
- 61C 61 cm for BUDI-S
- 72C 72 cm for BUDI-M

Output connector type

Grade C**	Connector type	
	SC	LC
UPC	S1	L1
APC 8°	S2	L2
APC 9°	S3	

** according to IEC 61755-1

UPC = Ultra polished physical contact
APC = Angled polished physical contact



In the in-line version, the connector for the common port is always SC. While an LC connector can be specified on the output, the connector for the common port will be either **SL1** (for SC/UPC) or **SL2** (for SC/APC). When ordering the butt version, if no connector is required for the common port, include "N" in the connector type (**NS1, NS2, NS3, NL1, NL2**). If the input cable is not connectorized, the cable length will be 2 meters.

Product can be installed in

MDU BUDI product range

- * Split ratio is always symmetrical
- * Cable is 1.8 mm LSZH with semi-tight buffering

Performance specifications

Please refer to RUD 5257 (grade A) or RUD 5330 (grade P and O).

For more technical options and order quantity information, please consult the product ordering guides or your local sales representative.

DATA SHEET



Tyco Electronics Raychem bvba

Dietssesteenweg 692
3010 Kessel-Lo, Belgium
Tel 32-16 351 011
Fax 32-16 351 697

www.te.com
www.te.com/telecomnetworks

TE Connectivity, TE connectivity (logo), Tyco Electronics, and TE (logo) are trademarks of the TE Connectivity Ltd. family of companies and its licensors. All other logos, products and/or company names referred to herein might be trademarks of their respective owners.

The information given herein, including drawings, illustrations and schematics which are intended for illustration purposes only, is believed to be reliable. However, TE Connectivity makes no warranties as to its accuracy or completeness and disclaims any liability in connection with its use. TE Connectivity's obligations shall only be as set forth in TE Connectivity's Standard Terms and Conditions of Sale for this product and in no case will TE Connectivity be liable for any incidental, indirect or consequential damages arising out of the sale, resale, use or misuse of the product. Users of TE Connectivity products should make their own evaluation to determine the suitability of each such product for the specific application.

Tyco Electronics Corporation, a TE Connectivity Ltd. Company. All Rights Reserved.

TC 1063/DS/5 08/13 Original © 2013