

HST-3000

Next Gen Handheld Services Tester



Enabling the Triple Play of Converged IP Voice, Video and Data

Test the copper, test the service, improve the process

- Thoroughly qualifies the copper with VF & WB TIMS, DVOM, TDR, RFL, OPENS, Leakage, Balance, Load Coil detection, and more...
- NEW – E1/Datacom SIM: G.703, G.821, G.826, M.2100, Datacom
 - Dual Tx & Rx E1 + Datacom interfaces
 - Datacom
 - Bulk n x 64 kbit/s BERT, Audio Monitor, Event log
 - Frame Relay
- NEW – ADSL1, ADSL2, ADSL2+, RE-ADSL – all in one module!
- Data layer test options: DHCP, IPoE, PPPoE, PPPoA, FTP throughput, and web Browser
- NEW – Verify IP Video service including STB (Set Top Box) emulation: IGMP (Broadcast) and RTSP (VOD) signaling protocols
- NEW – Evaluate key IP Video QoS parameters including Packet Loss, Packet jitter, IGMP latency, and PCR jitter
- VoIP phone emulation with CISCO SCCP, SIP, H.3232
- VoIP QoS: Packet loss, delay, jitter, MOS and R-Factor scores

In one lightweight, robust, battery operated tester, the JDSU HST-3000 offers more than any other handheld tester on the market. The combination of physical layer copper, WAN access circuit, as well, as IP voice, video, and data testing in a single handheld makes the HST-3000 the premier tool of choice for the roll-out of next-generation IP-based Triple Play services. Its scalable, modular design cost-effectively addresses today's needs and enables a solid future growth path through field swappable modules and software option package upgrades.

JDSU's HST-3000 all-in-one tester delivers comprehensive copper testing including DVOM, TDR, Wideband TIMS, spectral analysis, and Resistive Fault Location. Technologies and services such as Data-com (V series interfaces, etc.), Frame Relay, and E1/T1 are comprehensively supported with easy-to-use interfaces allowing difficult problems with or affecting premium services to be identified and resolved quickly. It also supports ADSL over POTS, ADSL over ISDN, and G.SHDSL support with xTU-C/R modem emulation. 10/100BT Ethernet interface allows the HST-3000 to segment problems between the PC, CPE, and access network. With its optional on-board IP and VoIP testing capabilities, the HST-3000 can validate VoIP service connectivity, feature availability and voice quality. In addition, it provides a comprehensive IP test suite including signaling, IP ping, packet statistic and trace route analysis to identify, diagnose and sectionalize VoIP problems. The IP Video option completes the Triple Play Services test support package. STB emulation enables the HST-3000 to establish program streams in a terminate mode not requiring CPE. QoS parameter measurement along with detailed troubleshooting analysis features make the HST a complete video tool. The HST-3000 is clearly a test package than can meet your needs today and grow with you to meet the testing challenges of tomorrow.

Test the Copper

- DVOM, TDR, Balance, Loads, Opens
- Wideband TIMS, Spectral Analysis, Resistive Fault Locate

Test the Service

- DDS, BRI, PRI, T1, E1, DS3
- HDSL, HDSL2, HDSL4 (via VT-100), PCM TIMS, and Signaling
- ADSL1, ADSL2, ADSL2+, RE-ADSL
- G.SHDSL (2 and 4 wire)

Test the Triple Play

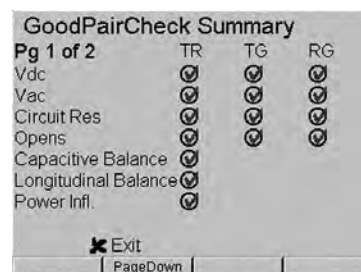
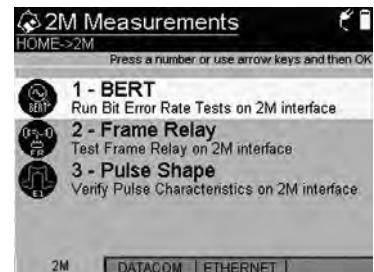
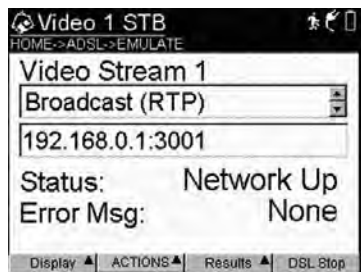
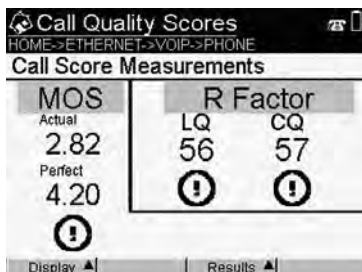
- Internet Data: FTP Throughput, Web Browser
- VoIP: Phone Emulation, Signaling, QoS (MOS; R-Factor)
- IP Video: STB Emulation, Broadcast and VOD, Video QoS

Improve the Process

- Auto tests and multiple configuration storage
- Scripted tests with server download up-dates
- File capture and export for analysis: VoIP
- Test results storage, annotate, and export with "File Manager"
- Flexible connectivity: Serial (RS-232); USB

The HST-3000 boasts advanced scripting features to improve compliance with operator Methods and Procedures through interactive scripts and auto-tests. Acceptable pass-fail thresholds can be programmed, even script sequences customized.

Use the HST-3000 everywhere to test the copper, test the service, and improve the process. The handheld, rugged and easy-to-use HST-3000 is ideal for field use. It is compact, rugged and can be used in almost all conditions, from inside the CO/Exchange to outside in moderate rain.



NORTH AMERICA TEL: 1 866 228 3762 FAX: +1 301 353 9216	LATIN AMERICA TEL: +55 11 5503 3800 FAX: +55 11 5505 1598	ASIA PACIFIC TEL: +852 2892 0990 FAX: +852 2892 0770	EMEA TEL: +49 7121 86 2222 FAX: +49 7121 86 1222	WEBSITE: www.jdsu.com
---	--	---	---	------------------------------