

FP11 Front Plate 19" - 2U 48 Port, Rail Sliding, Rack Type Patch Panels



Choose Your Panel

Order Code	: YT00434				
Description	: FRPS-T-NN-SX-FP11-00				
Adapter Type	: SC/LC(Dublex)/ E2000/MTRJ/ LX.5(Duplex)	Cassette	✓	Adapter	✗
Panel Type	: 2U , 48 Port , Empty	Pigtail	✗	Spl. Protector	✗
Order Code	:				
Description	: FRPS-T-SC-SX-FP11-48				
Adapter Type	: SC-PC, Simplex, Single Mode , 9/125 μ	Cassette	✓	Adapter	✓
Panel Type	: 2U , 48 Port , Full	Pigtail	✓	Spl. Protector	✓
Order Code	:				
Description	: FRPS-T-SA-SX-FP11-48				
Adapter Type	: SC-APC, Simplex, Single Mode, 9/125 μ	Cassette	✓	Adapter	✓
Panel Type	: 2U , 48 Port , Full	Pigtail	✓	Spl. Protector	✓
Order Code	:				
Description	: FRPS-T-LC-DX-FP11-96				
Adapter Type	: LC-PC, Duplex, Single Mode , 9/125 μ	Cassette	✓	Adapter	✓
Panel Type	: 2U , 96 Port , Full	Pigtail	✓	Spl. Protector	✓
Order Code	:				
Description	: FRPS-T-LA-DX-FP11-96				
Adapter Type	: LC-APC, Duplex, Single Mode , 9/125 μ	Cassette	✓	Adapter	✓
Panel Type	: 2U , 96 Port , Full	Pigtail	✓	Spl. Protector	✓
Order Code	:				
Description	: FRPS-T-M1-SX-FP11-48				
Adapter Type	: SC-PC, Simplex, Multi Mode, 50/125 μ	Cassette	✓	Adapter	✓
Panel Type	: 2U , 48 Port , Full	Pigtail	✓	Spl. Protector	✓
Order Code	:				
Description	: FRPS-T-M2-SX-FP11-48				
Adapter Type	: SC-PC, Simplex, Multi Mode, 62,5/125 μ	Cassette	✓	Adapter	✓
Panel Type	: 2U , 48 Port , Full	Pigtail	✓	Spl. Protector	✓

FP12 Front Plate
19"- 2U 48 Port, Rail Sliding,
Rack Type Patch Panels



Choose Your Panel

Order Code	: YT00435				
Description	: FRPS-T-NN-SX-FP12-00				
Adapter Type	: SC/LC(Dublex)/ E2000/MTRJ/ LX.5(Duplex)	Cassette	✓	Adapter	✗
Panel Type	: 2U , 48 Port , Empty	Pigtail	✗	Spl. Protector	✗

Order Code	:				
Description	: FRPS-T-SC-SX-FP12-48				
Adapter Type	: SC-PC, Simplex, Single Mode , 9/125 μ	Cassette	✓	Adapter	✓
Panel Type	: 2U , 48 Port , Full	Pigtail	✓	Spl. Protector	✓

Order Code	:				
Description	: FRPS-T-SA-SX-FP12-48				
Adapter Type	: SC-APC, Simplex, Single Mode, 9/125 μ	Cassette	✓	Adapter	✓
Panel Type	: 2U , 48 Port , Full	Pigtail	✓	Spl. Protector	✓

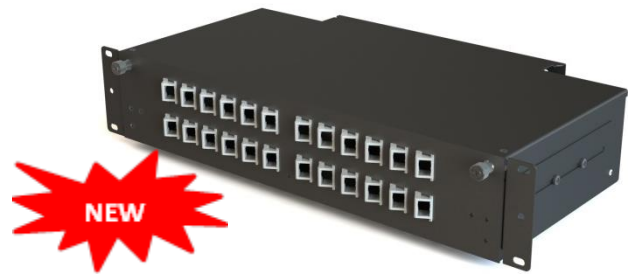
Order Code	:				
Description	: FRPS-T-LC-DX-FP12-96				
Adapter Type	: LC-PC, Duplex, Single Mode , 9/125 μ	Cassette	✓	Adapter	✓
Panel Type	: 2U , 96 Port , Full	Pigtail	✓	Spl. Protector	✓

Order Code	:				
Description	: FRPS-T-LA-DX-FP12-96				
Adapter Type	: LC-APC, Duplex, Single Mode , 9/125 μ	Cassette	✓	Adapter	✓
Panel Type	: 2U , 96 Port , Full	Pigtail	✓	Spl. Protector	✓

Order Code	:				
Description	: FRPS-T-M1-SX-FP12-48				
Adapter Type	: SC-PC, Simplex, Multi Mode, 50/125 μ	Cassette	✓	Adapter	✓
Panel Type	: 2U , 48 Port , Full	Pigtail	✓	Spl. Protector	✓

Order Code	:				
Description	: FRPS-T-M2-SX-FP12-48				
Adapter Type	: SC-PC, Simplex, Multi Mode, 62,5/125 μ	Cassette	✓	Adapter	✓
Panel Type	: 2U , 48 Port , Full	Pigtail	✓	Spl. Protector	✓

FP13 Front Plate, Angled 19"- 2U 24 Port, Rail Sliding, Rack Type Patch Panels



Choose Your Panel

Order Code	: YT00436			
Description	: FRPS-T-NN-SX-FP13-00			
Adapter Type	: SC/LC(Dublex)/ E2000/MTRJ/ LX.5(Duplex)	Cassette	✓	Adapter
Panel Type	: 2U , 24 Port , Empty	Pigtail	✗	Spl. Protector
				✗

Order Code	:			
Description	: FRPS-T-SC-SX-FP13-24			
Adapter Type	: SC-PC, Simplex, Single Mode , 9/125 μ	Cassette	✓	Adapter
Panel Type	: 2U , 24 Port , Full , Angled	Pigtail	✓	Spl. Protector
				✓

Order Code	:			
Description	: FRPS-T-SA-SX-FP13-24			
Adapter Type	: SC-APC, Simplex, Single Mode, 9/125 μ	Cassette	✓	Adapter
Panel Type	: 2U , 24 Port , Full, Angled	Pigtail	✓	Spl. Protector
				✓

Order Code	:			
Description	: FRPS-T-LC-DX-FP13-48			
Adapter Type	: LC-PC, Duplex, Single Mode , 9/125 μ	Cassette	✓	Adapter
Panel Type	: 2U , 48 Port , Full, Angled	Pigtail	✓	Spl. Protector
				✓

Order Code	:			
Description	: FRPS-T-LA-DX-FP13-48			
Adapter Type	: LC-APC, Duplex, Single Mode , 9/125 μ	Cassette	✓	Adapter
Panel Type	: 2U , 48 Port , Full, Angled	Pigtail	✓	Spl. Protector
				✓

Order Code	:			
Description	: FRPS-T-M1-SX-FP13-24			
Adapter Type	: SC-PC, Simplex, Multi Mode, 50/125 μ	Cassette	✓	Adapter
Panel Type	: 2U , 24 Port , Full, Angled	Pigtail	✓	Spl. Protector
				✓

Order Code	:			
Description	: FRPS-T-M2-SX-FP13-24			
Adapter Type	: SC-PC, Simplex, Multi Mode, 62,5/125 μ	Cassette	✓	Adapter
Panel Type	: 2U , 24 Port , Full, Angled	Pigtail	✓	Spl. Protector
				✓

Order Code	:				
Description	:	FRPS-T-FC-SX-FP13-24			
Adapter Type	:	FC-PC, Simplex, Single Mode , 9/125 μ	Cassette	✓	Adapter
Panel Type	:	2U , 24 Port , Full , Angled	Pigtail	✓	Spl. Protector

Order Code	:				
Description	:	FRPS-T-FA-SX-FP13-24			
Adapter Type	:	FC-APC, Simplex, Single Mode, 9/125 μ	Cassette	✓	Adapter
Panel Type	:	2U , 24 Port , Full , Angled	Pigtail	✓	Spl. Protector

FP14 Front Plate 19"- 2U 96 Port, Rail Sliding, Rack Type Patch Panels

Choose Your Panel



Order Code	:	YT00437			
Description	:	FRPS-T-NN-DX-FP14-00			
Adapter Type	:	SC Dublex	Cassette	✓	Adapter
Panel Type	:	2U , 96 Port , Empty	Pigtail	✗	Spl. Protector

Order Code	:				
Description	:	FRPS-T-SC-DX-FP14-96			
Adapter Type	:	SC-PC, Dublex, Single Mode , 9/125 μ	Cassette	✓	Adapter
Panel Type	:	2U , 96 Port , Full	Pigtail	✓	Spl. Protector

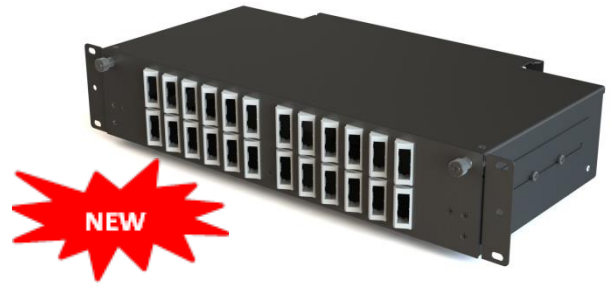
Order Code	:				
Description	:	FRPS-T-SA-DX-FP14-96			
Adapter Type	:	SC-APC, Dublex , Single Mode, 9/125 μ	Cassette	✓	Adapter
Panel Type	:	2U , 96 Port , Full	Pigtail	✓	Spl. Protector

Order Code	:				
Description	:	FRPS-T-M1-DX-FP14-96			
Adapter Type	:	SC-PC, Dublex , Multi Mode, 50/125 μ	Cassette	✓	Adapter
Panel Type	:	2U , 96 Port , Full	Pigtail	✓	Spl. Protector

Order Code	:				
Description	:	FRPS-T-M2-DX-FP14-96			
Adapter Type	:	SC-PC, Dublex, Multi Mode, 62,5/125 μ	Cassette	✓	Adapter
Panel Type	:	2U , 96 Port , Full	Pigtail	✓	Spl. Protector

FP15 Front Plate, Angled 19"- 2U 48 Port, Rail Sliding, Rack Type Patch Panels

Choose Your Panel



Order Code	: YT00438				
Description	: FRPS-T-NN-DX-FP15-00				
Adapter Type	: SC Dublex	Cassette	✓	Adapter	✗
Panel Type	: 2U , 48 Port , Empty	Pigtail	✗	Spl. Protector	✗

Order Code	:				
Description	: FRPS-T-SC-DX-FP15-48				
Adapter Type	: SC-PC, Dublex, Single Mode , 9/125 μ	Cassette	✓	Adapter	✓
Panel Type	: 2U , 48 Port , Full, Angled	Pigtail	✓	Spl. Protector	✓

Order Code	:				
Description	: FRPS-T-SA-DX-FP15-48				
Adapter Type	: SC-APC, Dublex , Single Mode, 9/125 μ	Cassette	✓	Adapter	✓
Panel Type	: 2U , 48 Port , Full, Angled	Pigtail	✓	Spl. Protector	✓

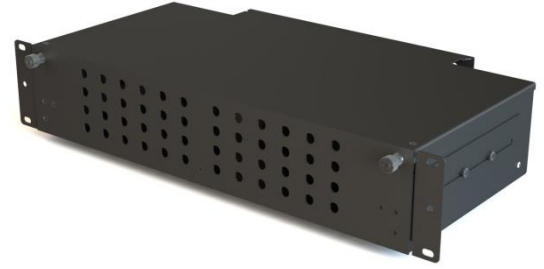
Order Code	:				
Description	: FRPS-T-M1-DX-FP15-48				
Adapter Type	: SC-PC, Dublex , Multi Mode, 50/125 μ	Cassette	✓	Adapter	✓
Panel Type	: 2U , 48 Port , Full, Angled	Pigtail	✓	Spl. Protector	✓

Order Code	:				
Description	: FRPS-T-M2-DX-FP15-48				
Adapter Type	: SC-PC, Dublex, Multi Mode, 62,5/125 μ	Cassette	✓	Adapter	✓
Panel Type	: 2U , 48 Port , Full, Angled	Pigtail	✓	Spl. Protector	✓

Order Code	:				
Description	: FRPS-T-FC-DX-FP15-48				
Adapter Type	: FC-PC, Simplex, Single Mode , 9/125 μ	Cassette	✓	Adapter	✓
Panel Type	: 2U , 48 Port , Full , Angled	Pigtail	✓	Spl. Protector	✓

Order Code	:				
Description	: FRPS-T-FA-DX-FP15-48				
Adapter Type	: FC-APC, Simplex, Single Mode , 9/125 μ	Cassette	✓	Adapter	✓
Panel Type	: 2U , 48 Port , Full, Angled	Pigtail	✓	Spl. Protector	✓

FP16 Front Plate
19"- 2U 48 Port, Rail Sliding,
Rack Type Patch Panels



Choose Your Panel

Order Code	: YT00439			
Description	: FRPS-T-NN-SX-FP16-00			
Adapter Type	: FC Simplex	Cassette	✓	Adapter
Panel Type	: 2U , 48 Port , Empty	Pigtail	✗	Spl. Protector
				✗

Order Code	:			
Description	: FRPS-T-FC-SX-FP16-48			
Adapter Type	: FC-PC, Simplex, Single Mode , 9/125 μ	Cassette	✓	Adapter
Panel Type	: 2U , 48 Port , Full	Pigtail	✓	Spl. Protector
				✓

Order Code	:			
Description	: FRPS-T-FA-SX-FP16-48			
Adapter Type	: FC-APC, Simplex, Single Mode , 9/125 μ	Cassette	✓	Adapter
Panel Type	: 2U , 48 Port , Full	Pigtail	✓	Spl. Protector
				✓
