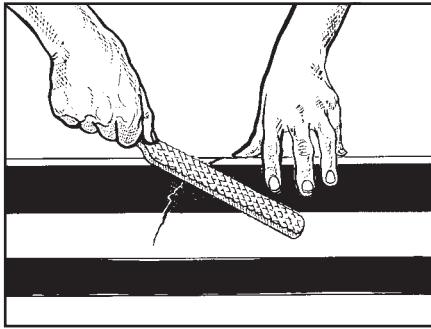




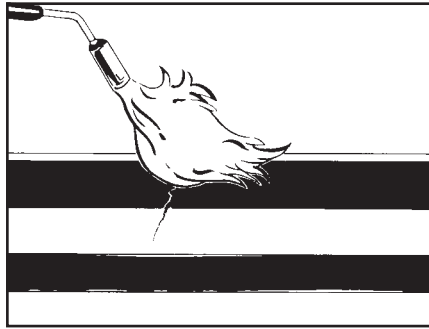
**Materials and equipment**

1. PERP MELTSTICK
2. Wire brush, knife
3. Propane tank regulator, torch
4. Standard safety equipment as prescribed by local regulations

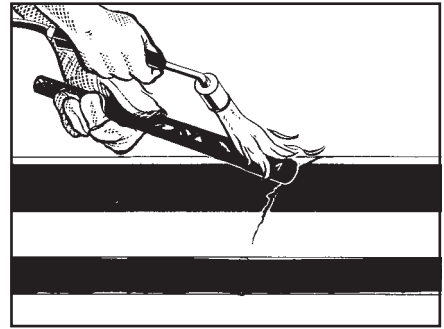
Installation has to be done according to local government regulations and usual safety precautions.



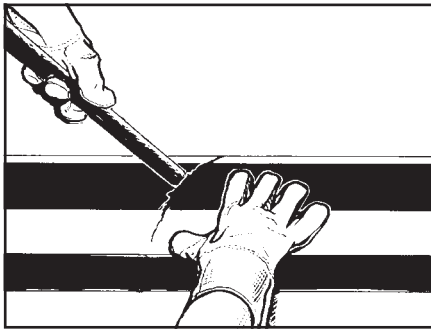
1. Remove loose coating from the damaged area with a knife, scraper or wire brush. Eliminate all sharp edges and clean the damaged area and adjacent coating to remove all foreign material such as dirt, rust, oil, grease and moisture.



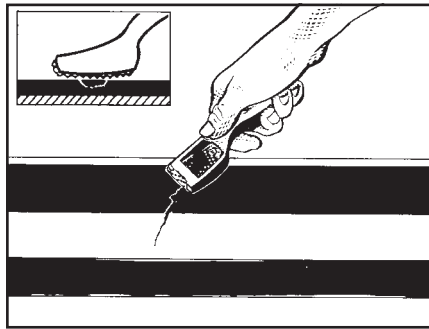
2. Preheat the pipe coating up to 60°C.



3. Heat the end of the PERP Melt Stick until it becomes glossy.



4. Spread the molten adhesive onto the damaged area.



5. When the PE is hard, smooth the molten adhesive flush with the PE line coating by use of a point scraper.

Berry Plastics warrants that the product conforms to its chemical and physical description and is appropriate for the use stated on the technical data sheet when used in compliance with Berry Plastics written instructions. Since many installation factors are beyond the control of Berry Plastics, the user shall determine the suitability of the products for the intended use and assume all risks and liabilities in connection herewith. Berry Plastics liability is stated in the standard terms and conditions of sale. Berry Plastics makes no other warranty either expressed or implied. All information contained in this technical data sheet is to be used as a guide and is subject to change without notice. This technical data sheet supersedes all previous data sheets on this product.



**CORROSION PROTECTION GROUP**  
www.berrycpg.com

Local Distributor / Representative:

For contact details of local Distributors / Representatives  
Please visit [www.berrycpg.com](http://www.berrycpg.com).

Headquarters : Berry Plastics Tapes & Coatings Division, Franklin MA, USA

**Franklin, MA, USA**  
Tel: +1 508 918 1714  
US Toll Free: +1 800 248 0149  
Fax: +1 508 918 1910  
CPG@berryplastics.com

**Houston, TX, USA**  
Tel: +1 713 676 0085  
US Toll Free: 01 888 676 7202  
Fax: +1 713 676 0086  
CPGH@berryplastics.com

**Tijuana, Mexico**  
Tel USA +1 858 633 9797  
Fax US: +1 858 633 9740  
Tel Mexico: +52 664 647 4397  
Fax Mexico: +52 664 647 4370  
CPGTJ@berryplastics.com

**Westerlo, Belgium**  
Tel. +32 14 722500  
Fax +32 14 722570  
CPGE@berryplastics.com

**Baroda, India**  
Tel: +91 2667 264721  
Fax: +91 2667 264724  
CPGIN@berryplastics.com