

Materials and equipment: Abrasive paper P80
 Pyrometer
 Berry Plastics approved torch or equivalent
 S1401 epoxy coating
 Cups and mixing sticks

Wet film thickness gauge
 Glass fiber web
 Applicator pads
 Protective gloves

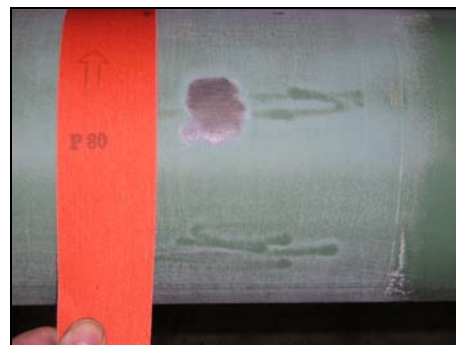
Application Guideline for repair of surface scratches and damages.



Scratch in FBE line coating.



Damage in FBE line coating > 10 cm²



Roughening of FBE line coating with P80 abrasive paper.

The area around the damage must be cleaned and free from foreign particles, oil and grease.
 In some cases, the line coating must be cleaned by using a solvent and dried with cloths or paper.
 Sharp edges must be smoothed with abrasive paper or similar.
 The repair area must be cleaned and roughened by abrasive paper (grain P80) or sweep blasted at least 50mm (2 inches) wider (all sides) than the size of the damage.



Preheating and temperature measuring / 50°C to 60°C

In order to finish with a smooth and easy S1401 epoxy application, we recommend preheating of the area to a temperature between 50°C and 60°C.

S1401 Epoxy Coating for FBE Line Coating Repair

S1401 epoxy dispensing

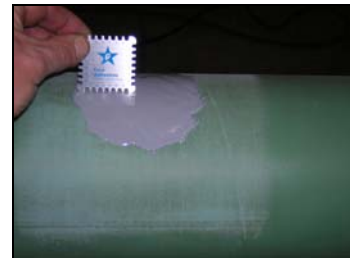


S1401 epoxy dispensing

For proper S1401 epoxy dispensing and mixing it is recommended to keep the temperature of part A above 23°C. When temperature of mixture is too cold, application on the pipe will be more difficult and curing time is extended.

S1401 epoxy application

The S1401 epoxy coating is spread equally over the cleaned and preheated area. This area is minimum 50mm (2 inches) larger in all directions than the scratch or damage. The wet film thickness should be between 18 and 20 mils.



Local scratch repair / S1401 epoxy application and thickness measuring / 18 mils to 20 mils.



Circumferential damage repair / S1401 epoxy application and thickness measuring / 18 mils to 20 mils.

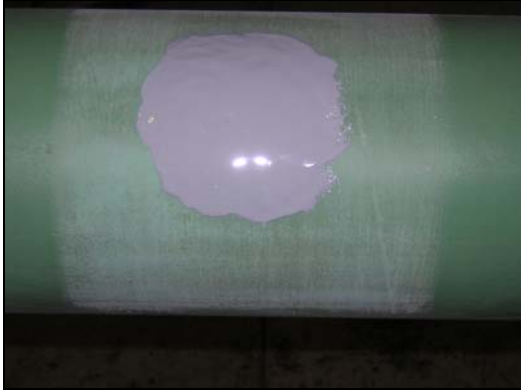
First epoxy layer of 18 mils to 22 mils.

Circumferential glass fiber wrap in first epoxy layer.

Second epoxy layer on top of glass fiber wrap of 18 mils to 22 mils.

S1401 Epoxy Coating for FBE Line Coating Repair

S1401 epoxy repairs



Finished S1401 repair of damage in FBE line coating.



Finished S1401 repair of scratch in FBE line coating.

Berry Plastics warrants that the product conforms to its chemical and physical description and is appropriate for the use stated on the technical data sheet when used in compliance with Berry Plastics written instructions. Since many installation factors are beyond the control of Berry Plastics, the user shall determine the suitability of the products for the intended use and assume all risks and liabilities in connection herewith. Berry Plastics liability is stated in the standard terms and conditions of sale. Berry Plastics makes no other warranty either expressed or implied. All information contained in this technical data sheet is to be used as a guide and is subject to change without notice. This technical data sheet supersedes all previous data sheets on this product.

BERRY
PLASTICS
CORPORATION™
AND SUBSIDIARIES
CORROSION PROTECTION GROUP
www.berrycpg.com

Local Distributor / Representative:

For contact details of local Distributors / Representatives
Please visit www.berrycpg.com.

Headquarters : Berry Plastics Tapes & Coatings Division, Franklin MA, USA

Franklin, MA, USA
Tel: +1 508 918 1714
US Toll Free: +1 800 248 0149
Fax: +1 508 918 1910
CPG@berryplastics.com

Houston, TX, USA
Tel: +1 713 676 0085
US Toll Free: 01 888 676 7202
Fax: +1 713 676 0086
CPGH@berryplastics.com

Tijuana, Mexico
Tel USA +1 858 633 9797
Fax US: +1 858 633 9740
Tel Mexico: +52 664 647 4397
Fax Mexico: +52 664 647 4370
CPGTJ@berryplastics.com

Westerlo, Belgium
Tel. +32 14 722500
Fax +32 14 722570
CPGE@berryplastics.com

Baroda, India
Tel: +91 2667 264721
Fax: +91 2667 264724
CPGIN@berryplastics.com