

Front Patching Shelves are used to terminate and distribute optical fiber cables, termination box is ranging from 12 ports to 96 ports. They are convenient equipment to organize and connect the fiber optic links. It is suitable for the use in telecommunication network, central office optical cable system and premise fiber networks.

Typical type of our fiber patch panels are rack mounted, they are with optional different kinds of fiber optic adapters ports and pre-installed inner trays and accessories, optional pigtailed with different types, common style is SC/FC/ST/LC, E2000, MTRJ, MU types can be custom made based on quantity

Features and Benefits

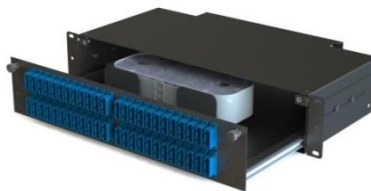
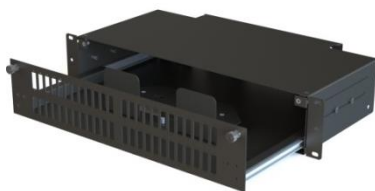
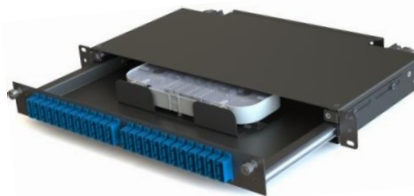
- ✓ 1U and 2U versions (12,24,36,48 and 96 port capacity)
- ✓ Easy time-saving installation
- ✓ Different front panel options
- ✓ Angled panel versions using angles simplex/duplex clips
- ✓ Compact and safe design
- ✓ Rear cable entry
- ✓ Confirms 19" or ETSI installations
- ✓ Accessory options for front cable management and guidance for patch cords
- ✓ Captive Panel Screws ensure easy/safe locking of the drawer
- ✓ Well-designed connector and cable accessibility, bend radius protection, cable routing paths and physical protection.
- ✓ 1U Panel Dimensions ; 235mm (W) x 482mm (L) x 44mm (H)
- ✓ 2U Panel Dimensions ; 235mm (W) x 482mm (L) x 88mm (H)



1U&2U EMPTY PANELS

1U&2U SPLICE&PATCH PANELS

1U&2U PATCH&PATCH PANELS



OPTIONAL ACCESSORIES:



Short Cable Guides with front fence

Order Code: YT0440(1 U) ; Order Code: YT0441 (2 U)

Long Cable Guide with front fence

Order Code: YT0442(1 U) ; Order Code: YT0443 (2 U)

Short Cable Guides (Left and Right hand sided)

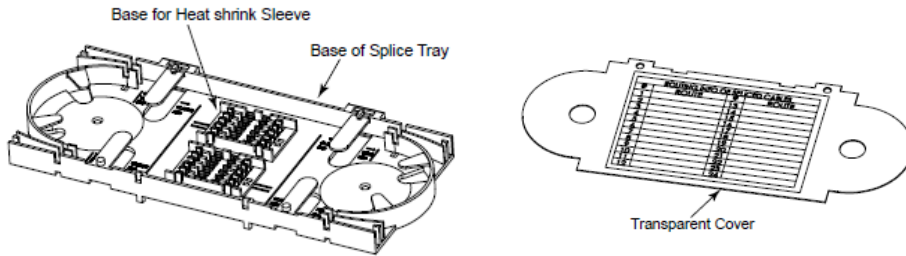
Order Code: YT0444(1 U) ; Order Code: YT0445 (2 U)

Adaptation Bracket Kit ETSI--19" to 21"

Order Code: YT00446 (1 U) ; Order Code: YT0447 (2 U)

24 FO Splice Trays

Ordering Code: YT00423



60x3 mm Splice Protectors

Ordering Code: YT00422