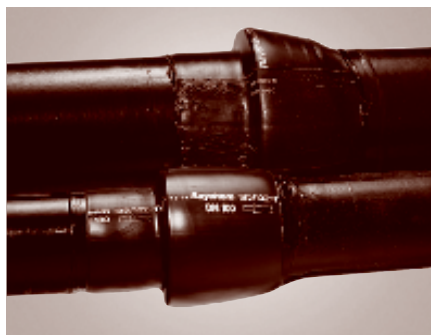


The corrosion protection sleeve for socket joints in steel and ductile cast iron networks.



Product description

MEPS, MPSM socket joint coating and sealing.

Construction: Two-layer system:

First layer: Visco-elastic adhesive sealant.

Second layer: Thick-walled, radiation cross-linked, high density polyethylene.

The wrap-around MEPS and the tubular MPSM are heat-shrinkable socket joint corrosion protection coatings. MEPS/MPSM are typically used on steel or ductile iron pipes coated with PE, concrete or other coatings, i.e. paint and zinc. MEPS/MPSM are also used to coat reducers, bends and dielectric joints.

For specially designed bell & spigot type joints, please refer to our special range of products (TISK, TISW-F, TISKW-F).

The installation is carried out directly on the cleaned and prepared pipe surface without any primer being required. Heating with a regular gas torch lets the high shrink-ratio backing reduce in size to form a tight and clean fit around the socket joint. While shrinking, the sealant, with its superior flow and fill characteristics, spreads evenly over the complete pipe surface and into all cavities.

Product features/benefits

- **Backing with enhanced shrink ratio**
Conforms easily to socket joint shapes.
- **High impact strength & high penetration resistance**
Virtually no risk of damage during operation.
- **Fully retains the deflection and longitudinal movement of the socket joint**
No break of the sealing ring.
- **Seal resists vibration, deflection and axial movement**
Reliable, high-performance seal stops water ingress.
- **No special filler needed**
Simple 1 part installation.
- **Low preheat requirements**
Fast installation---saves time.
- **No special equipment required**
Keeps installation costs low.

Product selection guide

	MEPS	MPSM
Max operating temperature	30°C	30°C
Compatible line coatings	PE, Fibre-Cement, Zinc, Bitumen paint	PE, Fibre-Cement, Zinc, Bitumen paint
Min preheat temperature	50°C	50°C
Recommended pipe preparation	ST3	ST3
Soil stress restrictions	None	None
Performance	EN 12068 C30	EN 12068 C30

Product thickness

	MEPS	MPSM
Backing (as supplied)	0.035 in. 0.9 mm	0.035 – 0.059 in. 0.9 -1.5 mm
Backing (fully free recovered)	0.055 in. 1.4 mm	0.055 – 0.090 in. 1.4 – 2.3 mm
Adhesive (as supplied)	0.059 in. 1.5 mm	0.035 – 0.039 in. 0.9 – 1.0 mm

Product properties: MEPS / MPSM

Property	Test method	Typical Value MEPS	Typical Value MPSM
Backing			
Tensile strength	ASTM D-638	3300 psi (22.8 MPa)	3300 psi (22.8 MPa)
Elongation	ASTM D-638	600%	600%
Hardness, Shore D	ASTM D-2240	55	55
Shrink force	ASTM D-638 150°C	40 psi	40 psi
Dielectric strength	ASTM D-149	900 volts/mil 35 kV/mm	900 volts/mil 35 kV/mm
Moisture absorption	ASTM D-570	0.05%	0.05%
Adhesive			
Softening point	ASTM E-28	92°C	134°C
Lap shear	EN 12068 @ 10 mm /min.	8 N/cm ²	7 N/cm ²
Sleeve			
Peel to Steel	EN 12068 @ 10 mm /min.	9 N/cm	19 N/cm
Impact resistance	EN 12068, Class C	> 15 Nm	> 15 Nm
Penetration resistance	EN 12068, Class C30	> 0.6 mm *	> 0.6 mm *
Resistance to joint deflection and displacement	DIN 30672	Pass	Pass
Cathodic disbondment	EN 12068 30 days	9 mm radius	4 mm radius

* Remaining coating thickness

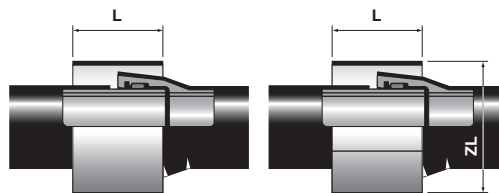
Ordering information

MEPS type products are available:

- as uni-sleeve (pre-cut sleeve with pre-attached closure patch)
- as a roll (closure patch to be ordered separately)

MPSM type products are available:

- as ready-to-size tubular sleeves



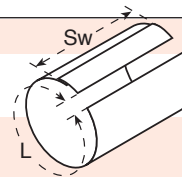
L= Sleeve width
ZL= Nominal pipe diameter

MEPS (wrap-around)

* Uni-sleeve

Example: MEPS-C30-(UNIV)-DN150-300

		Standard Ordering options
C30	Performance classification	C30
DN100	Nominal pipe diameter	DN150 (6.625") – DN 1000 (40") (> DN1000 (40") on request only)
UNIV	Universal socket joint (special cutlength)	DN 150 (6.625") - DN 1000 (40")



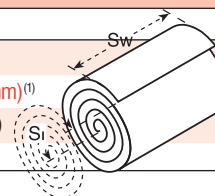
* Roll form (closure patches to be ordered separately)

Example: MEPS-C30-12x100-RL

		Standard Ordering options
C30	Performance classification	C30
12	Roll width in inches (Sw)	12" (300 mm) ⁽¹⁾ , 17" (450 mm) ⁽¹⁾ , 24" (600 mm) ⁽¹⁾ , 34" (870 mm) ⁽¹⁾
100	Roll length in feet (SI)	100 ft (= 30 m), 66 ft (= 20 m), for width 34" (870 mm) only
RL	Unit of measure	roll

⁽¹⁾ Nominal width

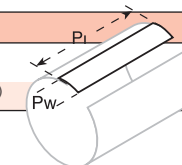
* Closure patch



Example: WPCP-IV-6x12

6	Closure patch width in inches (Pw)	6" (150 mm), 8" (200 mm)
12	Closure patch length in inches (PI)	12" (300 mm) ⁽¹⁾ , 17" (450 mm) ⁽¹⁾ , 24" (600 mm) ⁽¹⁾ , 34" (870 mm) ⁽¹⁾

⁽¹⁾ Nominal width



Sleeve cut lengths and appropriate closure patch widths depend on the pipe size and product construction, see application table.

MPSM (tubular)

Example: MPSM-C30-UNIV-300-DN100

		Standard Ordering options
C30	Performance classification	C30
300	Sleeve width in mm	300 mm (12")
DN100	Nominal pipe diameter	DN80 (3.5") – DN300 (12.75") (> DN300 on request only) *

* For pipe sizes exceeding DN300, the use of wrap-around MEPS sleeves is recommended.

For proper product selection, see latest application table AT-MEPS/MPSM.

For proper product installation, see latest installation instruction.

Berry Plastics warrants that the product conforms to its chemical and physical description and is appropriate for the use stated on the technical data sheet when used in compliance with Berry Plastics written instructions. Since many installation factors are beyond the control of Berry Plastics, the user shall determine the suitability of the products for the intended use and assume all risks and liabilities in connection herewith. Berry Plastics liability is stated in the standard terms and conditions of sale. Berry Plastics makes no other warranty either expressed or implied. All information contained in this technical data sheet is to be used as a guide and is subject to change without notice. This technical data sheet supersedes all previous data sheets on this product.



CORROSION PROTECTION GROUP

www.berrycpg.com

Local Distributor / Representative:

For contact details of local Distributors / Representatives
Please visit www.berrycpg.com.

Headquarters : Berry Plastics Tapes & Coatings Division, Franklin MA, USA

Franklin, MA, USA

Tel: +1 508 918 1714

US Toll Free: +1 800 248 0149

Fax: +1 508 918 1910

CPG@berryplastics.com

Houston, TX, USA

Tel: +1 713 676 0085

US Toll Free: 01 888 676 7202

Fax: +1 713 676 0086

CPGH@berryplastics.com

Tijuana, Mexico

Tel USA +1 858 633 9797

Fax US: +1 858 633 9740

Tel Mexico: +52 664 647 4397

Fax Mexico: +52 664 647 4370

CPGTJ@berryplastics.com

Aarschot, Belgium

Tel: +32 16 55 36 00

Fax: +32 16 55 36 74

CPGE@berryplastics.com

Baroda, India

Tel: +91 2667 264721

Fax: +91 2667 264724

CPGIN@berryplastics.com

DS-MEPS/MPSM-REV-6-0309